

Anti-Flag mlgG1 Antibody

Product Information

Product Name	Anti-Flag mlgG1 Antibody
Storage temp.	Store at 4°C short term. Store at -20°C long term.
Catalog# / Size	GM-30726AB-10 / 10 µg GM-30726AB-100 / 100 µg GM-30726AB-1000 / 1 mg

Antibody Information

Target	DYKDDDDK peptide
Antibody Type	Monoclonal
Isotype	Mouse IgG1, κ
Clone	/
Expression System	CHO
Aggregation	/
Purity	> 95% as determined by SDS-PAGE
Endotoxin	< 1 EU/mg, determined by LAL gel clotting assay
Sterility	0.2 µm Filtered
Antigen	/
Conjugate	Unconjugated
Application	Flow cytometry WB: 1:1000-1:4000; Western Blotting tested IP
Alternative Names	DYKDDDDK Tag; Anti-DDDDK tag; FLAG antibody
Description	Epitope tags are useful for the labeling and detection of proteins using immunoblotting, immunoprecipitation, and immunostaining techniques. Because of their small size, they are unlikely to affect the tagged protein's biochemical properties. The DYKDDDDK peptide has been used extensively as a general epitope tag in expression vectors. This peptide can be expressed and detected with the protein of interest as an amino-terminal or carboxy-terminal fusion.
Formulation	Phosphate-buffered solution, 50% glycerinum, 0.05% Bacteriostatic preservative, pH 7.2.

Version:3.2 Revision Date:10/30/2023

Data Examples

Flow cytometry

The recommended usage range is 0.5-4 μg per test. Rhesus_LILRB1 HEK-293 Cell Line was stained with Anti-Flag mIgG1 Antibody (Catalog # GM-30726AB)(diluted 1:1000) or isotype control antibody, followed by anti-Mouse IgG APC-conjugated Secondary Antibody.

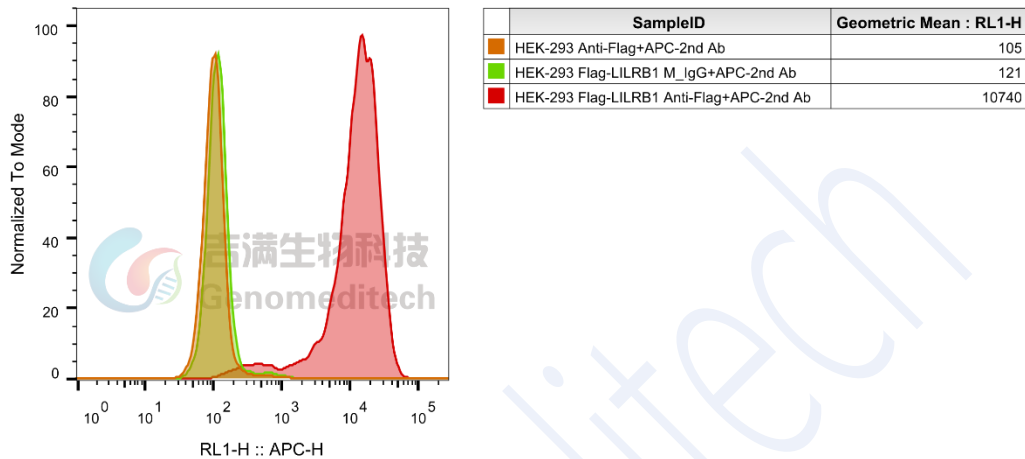
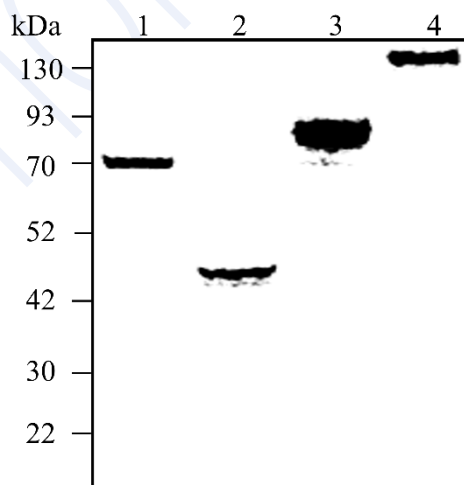


Fig 1

WB

After the whole protein was extracted from different cells, WB experiment was conducted, and Anti-Flag mIgG1 Antibody (Catalog # GM-30726AB) (diluted 1:1000) were used for overnight incubation at 4°C. HRP was coupled with secondary antibody and incubated at room temperature for 2 h before development



Lane 1: Rat_Dnm1(Drp1)-Flag cell line (GM-C26197) whole cell lysate.
 Lane 2: H_ALKBH5-Flag cell line (GM-C27691) whole cell lysate.
 Lane 3: Rat_Ctnnb1(β -catenin)-Flag cell line (GM-C27472) whole cell lysate.
 Lane 4: Flag-H_LATS2 cell line (GM-C27005) whole cell lysate.

Fig 2